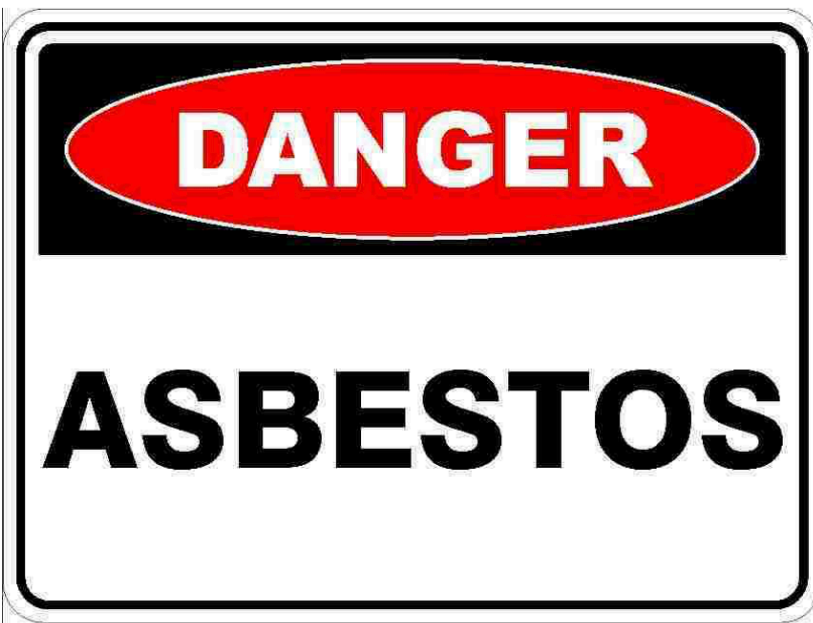


ASBESTOS



TANNER'S CROSSING
PLANNING DISTRICT

ASBESTOS

Asbestos is a term used to refer to six naturally occurring silicate minerals. All are composed of long and thin fibrous crystals, each fiber being composed of many microscopic 'fibrils' that can be released into the atmosphere by abrasion and other processes. Asbestos is a well known health hazard, and use of it as a building material is now banned in many countries. Inhalation of the fibres can lead to various lung conditions, including asbestosis and cancer.

FREQUENTLY ASKED QUESTIONS

Is there asbestos in my building?

If your house or building was constructed prior to the early 1980's there's a good chance that some of the materials used in the construction contain asbestos.

Where can asbestos be found?

Asbestos has been found in many products around construction sites. It has been used in: clapboard, shingles and felt for roofing; exterior siding; pipe and boiler covering; compounds and cement such as caulk, putty, roof patching, furnace cement and driveway coating; wallboard; textured and latex paints; acoustical ceiling tiles and plaster; vinyl floor tiles; and appliance wiring. Loose-fill vermiculite insulation may contain traces of "amphibole" asbestos.

How do I know for sure if there is asbestos in my building?

If you do not know if products in your building contain asbestos have an experienced contractor inspect them. If there is asbestos the best interim measure (unless the product is peeling or deteriorated) is to seal the surface temporarily so the fibres will not be released into indoor air. If the product is already protected or isolated, simply leave it alone. To find companies that specialize in asbestos detection and testing, search on-line Manitoba Yellow Pages TM under "Asbestos".

What can or should I do if asbestos is found in my building?

It's a complex and expensive matter to remove asbestos, and should be done by an experienced contractor. When disturbing an asbestos product, maximum precautions must be taken to safeguard the workers and anybody else who may be nearby. Asbestos dust must remain within the work area so that it cannot be breathed in by unprotected persons.

When does asbestos need to be removed?

If you know that your building contains asbestos it must be moved prior to being disturbed or where work takes place near asbestos. This means if your building contains asbestos and you plan to alter, add to or demolish your building, your first call should be to a qualified asbestos abatement contractor.

What are my responsibilities as an owner?

If asbestos is found in your building you are required by law to keep a detailed and up-to-date inventory of the asbestos-containing material in your building. This record should be kept for at least 30 years and be made available to anyone who may perform work to your building.

If you plan to make alterations to your building or demolish it, you are required to take measures to ensure that asbestos-containing material is prevented from entering the atmosphere and that no person working on your building is exposed to any asbestos-containing material that may create a risk to their safety or health.

Abatement Information

For more information on the proper detection, abatement, handling and disposal of hazardous materials within your home, contact the Brandon office of the Manitoba Workplace Safety and Health at least 5 days prior to starting.

What to do if you know you have Asbestos?

If you know that your building contains asbestos and you plan to alter or demolish it, you are required to contact Manitoba Workplace Safety and Health at least 5 days prior to starting.

About Asbestos

There are several fibrous minerals commonly known as asbestos. These minerals can be used to make products strong, long lasting and fire-resistant.

Before 1990, asbestos was mainly used for insulating buildings and homes against cold weather and noise. It was also used for fireproofing.

The manufacture, import, sale and use of products containing asbestos is prohibited in Canada.

However, asbestos may still be found in older building materials, such as:

- house siding
- floor and ceiling tiles
- tar paper
- cement and plaster
- roofing products, such as:
- shingles and felt

surface treatments, such as:

- paint
- drywall
- sealants
- industrial furnaces and heating systems
- insulation, including around hot water pipes and tanks
- putty
- caulking
- spackling

Some older automotive parts may contain asbestos, including: vehicle transmission components, like clutches car and truck brake pads.

Asbestos fibers may also be released into drinking water.

SOME PRODUCTS CONTAINING ASBESTOS?



Asbestos Cement Panel



Asbestos Vermiculite Insulation



Asbestos Spray –applied



Asbestos Ceiling Tiles



Asbestos Floor Tiles



Asbestos Textured Coating



Asbestos Paint



Asbestos Cloth



Asbestos Chimney Flue



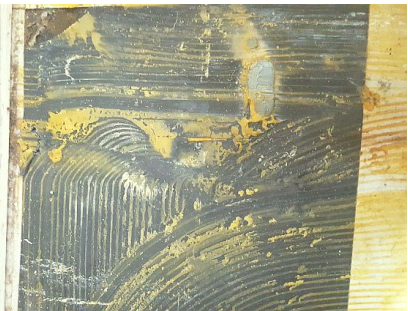
Asbestos Attic Insulation



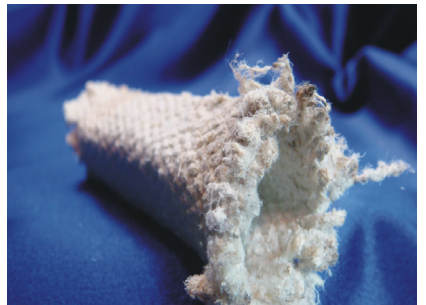
Asbestos Cement Products



Asbestos Gaskets



Asbestos Adhesive



Asbestos Fabric



Asbestos Pipe Wrap



Asbestos Roofing Material

Contact Us

Tanner's Crossing Planning District

PO Box 1072
2nd Floor, Civic Centre
103 Main Street South
Minnedosa, MB
R0J 1E0
Phone: 204.867.2364
Cell: 204.868.5973

Email: tcpd@mymts.net

www.discoverminnedosa.com/business/planning-development/

Find Us on Facebook 

Or contact the member jurisdictions of Tanner's Crossing Planning District:

Town of Minnedosa

103 Main Street South
Minnedosa, MB
R0J 1E0
Phone: 204.867.2727

R.M. of Minto-Odanah

49 Main Street South
Minnedosa, MB
R0J 1E0
Phone: 204.867.3282